

NORMBAU

PASSION FOR CARE

Lift-up support
for side fixing



Greater flexibility for folding grab rail applications

Side-mounted for improved use of space in small bathrooms

Specific challenges are involved in creating accessible bathrooms with restricted space. The NORMBAU Cavere range of side-mounted folding grab rails presents a new solution developed to provide greater flexibility for installing support aids for those with restricted mobility.

High accessibility for small bathrooms

The new folding grab rails in the NORMBAU Cavere bathroom range can be mounted on the left or right instead of on the rear wall. They can therefore be attached to structures such as installation shafts, existing wall projections or concealed cisterns set into the wall. As such, they open up additional possibilities for optimal use of space in small or unfavourably proportioned bathrooms, which in turn enables freedom of movement, safety and comfort for those with restricted mobility. They are ideal as modifications to home bathrooms for adapting to new life situations, for hospitals, residential homes

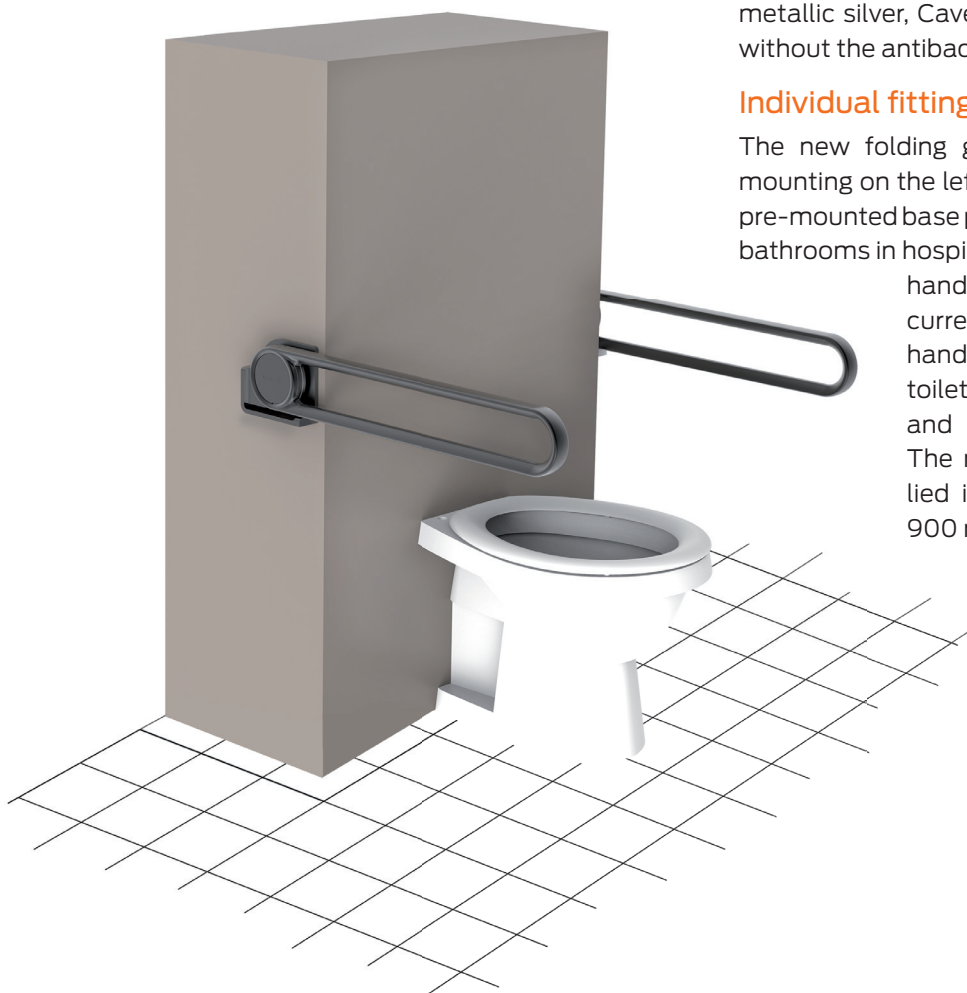
and other care facilities, as well as for improved or full accessibility in semi-public bathrooms.

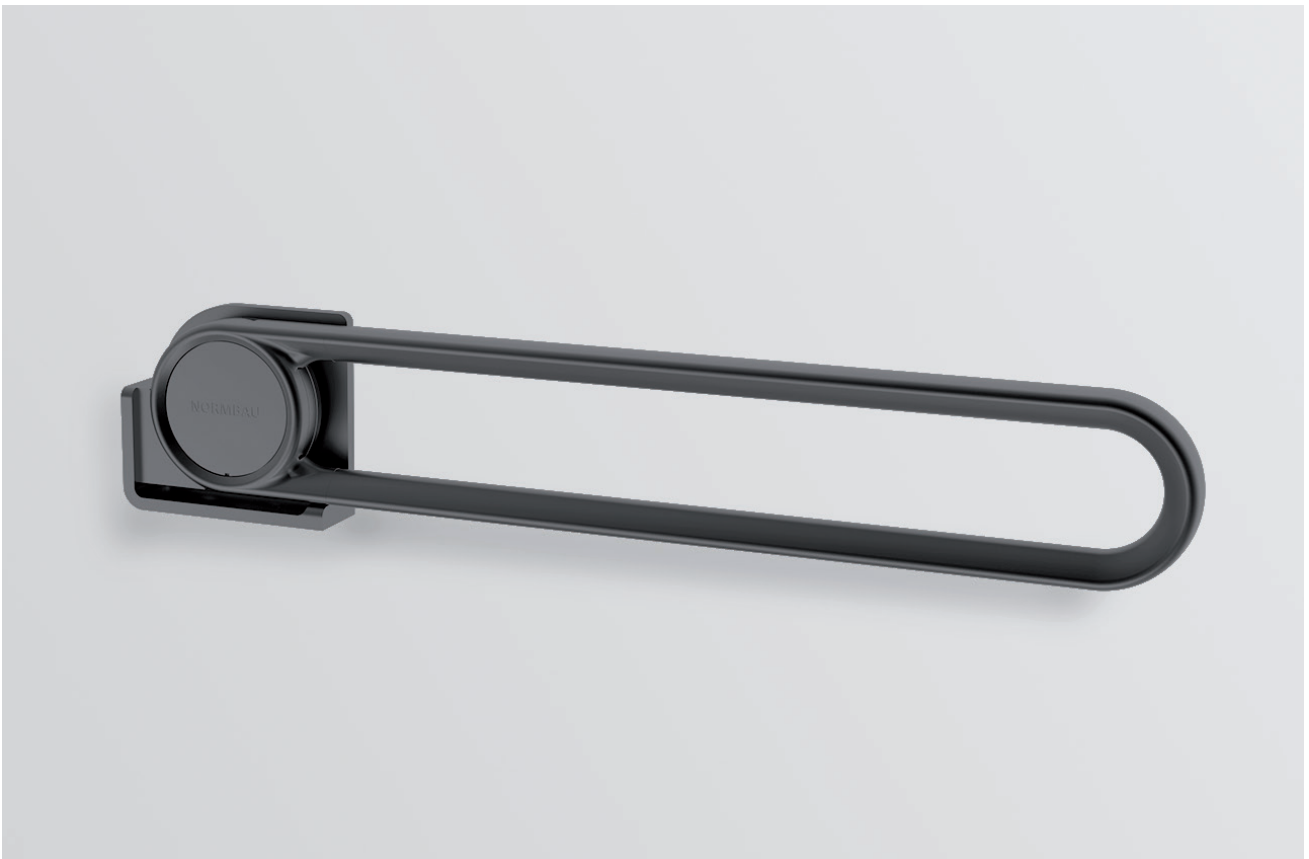
Safety and hygiene take priority

The fittings and product characteristics of the new folding grab rails are the same as for models used for conventional rear wall mounting. The grab rail coordinates well with different bathroom furnishing styles thanks to its aesthetically pleasing design and colour scheme. It has a load capacity of up to 100 kilograms. The trigonometric contours of the rail profiles provide grip and support that is both ergonomic and safe. An adjustable brake ensures that the rail is securely held in place in the folded position and its operation can be controlled using the adjustable screw. The inclination of the rail is also adjustable. The robust slide bearing technology is maintenance-free and durable, as well as being powder-coated for a higher level of hygiene and antibacterial protection. It is available in all the colours of the Cavere product range: metallic anthracite, metallic silver, Cavere white, as well as in aubergine without the antibacterial protection.

Individual fittings and sizes

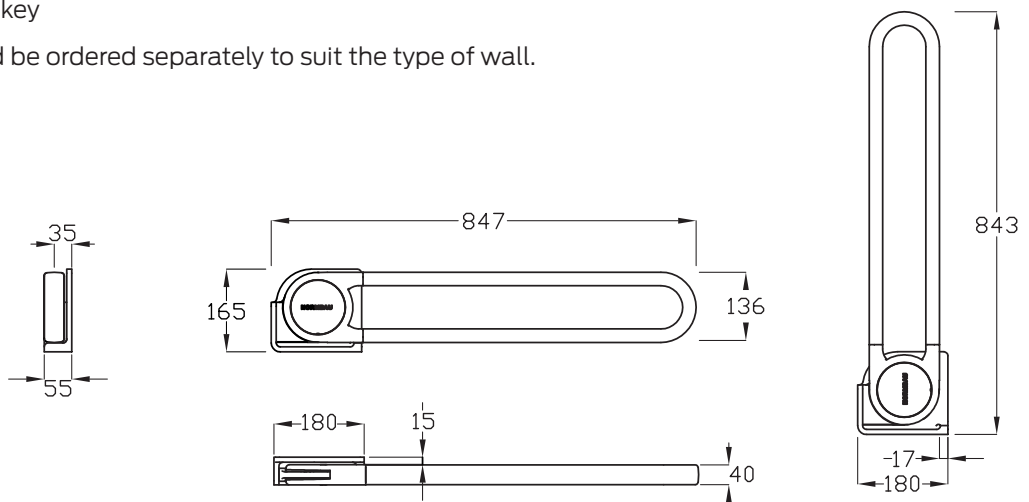
The new folding grab rails are available for side mounting on the left and right. Models that fit onto a pre-mounted base plate are also available. As a result, bathrooms in hospitals or residential homes with few hand rails can be adapted to meet current needs with or without folding hand rails. The optional extras include toilet roll holders, shower spray guards and assorted electric push buttons. The new folding hand rails are supplied in lengths of 600, 725, 850 and 900 millimetres.





Lift-up support for side fixing

- Length 600, 725, 850 und 900 mm
- made of aluminium
- scratch-resistant powder coating with antibacterial protection
- available in Cavere colours
- with trigonometric contour for ergonomic support and grip
- left or right hand application
- with durable maintenance-free, friction bearings
- with adjustable brake
- can be fitted with paper roll holder 7449 110
- maximum loading permitted: 100 kgs
- Supplied with allen key
- The fixing set should be ordered separately to suit the type of wall.



A passionate approach to enhancing quality of life

The "PASSION FOR CARE" slogan was coined to epitomise exactly what the company is all about. It describes the company's mission to never stop looking for new solutions and possibilities, to constantly improve even its most tried-and-tested approaches, and to offer customers comprehensive advice and support with the greatest level of commitment. The slogan was developed as part of an intensive project carried out by senior management together with employees from all levels of the company.

Facilitating participation and inclusion

One of the essential aims of the work carried out by NORMBAU is to facilitate participation and inclusion for people with disabilities. NORMBAU products are designed to help people retain their independence while providing a sense of security that builds their confidence. With this in mind, maximum quality and the ongoing pursuit of the perfect product are absolutely indispensable.



Convincing functionality and aesthetics

The whole host of prestigious design awards won by NORMBAU products are testament to their overwhelming popularity in terms of both functionality and aesthetics. Then there's also the fact that there's a range available for virtually every environment – from private households, clinics, residential homes and assisted living facilities right through to the hotel industry, catering trade and other public domains.

Thoroughness and persistence: The keys to success

NORMBAU's success can be attributed to the traditional values of thoroughness and perseverance that the company has been upholding ever since it was founded at the foot of the Black Forest back in 1954. These values are taken as both the basis for and a guarantee of the level of quality that offers long-term, sustainable benefits for its customers. NORMBAU products are now available the world over in the most diverse scenarios: from clinics, residential homes and care facilities right through to Hong Kong Disneyland and even the San Francisco 49ers' football stadium.

Passionate about customers and employees

The corporate slogan of "PASSION FOR CARE" is the guiding principle behind all of the company's internal and external activities. It represents the passion of the development department that works in line with the latest standards and cutting-edge production tools. It also defines our approach to quality management based on ISO 9001, our voluntary TÜV certifications, and stringent quality controls we have in place. What's more, the company's clear concern for its employees' welfare is demonstrated in a number of ways, including its occupational health and safety management qualification in line with BS OHSAS 18001. As far as our passion for our customers is concerned, our product range is merely the tip of the iceberg, as we also offer comprehensive planning documents and supporting materials to make your life that bit easier. Even once you have made your purchase, our passionate, understanding advisors and customer service teams are always on hand with valuable advice.

Responsibility of our environment and resources

"PASSION FOR CARE" stands for the responsibility of our environment and resources: In product planning, purchasing and production, we set great store by environmentally friendly and sustainable manufacturing processes and workplaces that are hygienically safe. Each of our employees is instructed to act in an environmentally friendly manner, to identify grievances and to contribute to the avoidance of waste through appropriate proposals. ISO 14001:2004 certification is the basis of our environmental management.